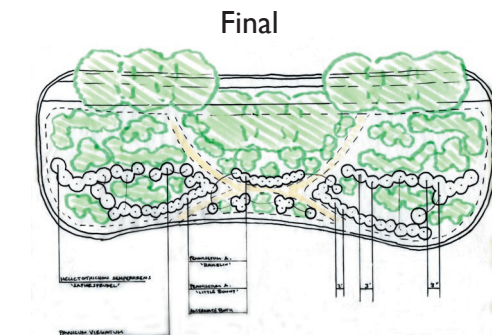
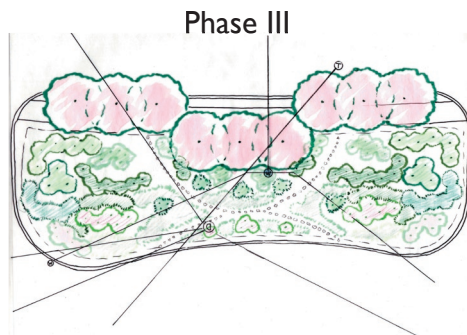
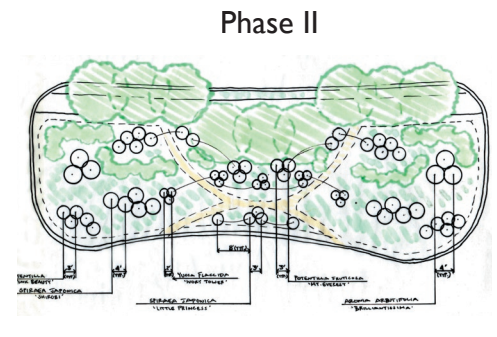
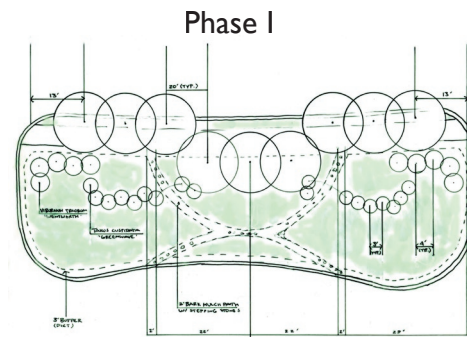


Client: Wilde Island Association
Newton, MA

Designer: Ferrell Mackey
Wellesley, MA

Completion: Summer 2004



The residential neighborhood around Wilde Road’s intersection with Beacon Street, a busy thoroughfare, lobbied the City of Newton to improve the intersection’s small and not very functional traffic island, offering to ‘adopt’ the space once the island was improved. The City responded affirmatively, and the neighborhood became responsible for planning, planting, and maintaining this new greenspace.

The City provided granite curbing, a sidewalk, a source of water, and new soil and mulch. The new traffic island, roughly 100’ x 35’, improves traffic flow and safety.

As construction was beginning, the neighborhood organization came to COGdesign seeking a design concept, planting plan, and landscape maintenance guidelines for the greatly enlarged island. They asked for a phased approach

that would allow them to begin early with modest but worthwhile improvements and work toward a more ambitious scheme over time.

COG’s designer, Ferrell Mackey, met with the Friends to discuss what they hoped to achieve with

the new space; she then provided a three-phase plan. Phase I will give the design its basic structure: flowering crabapples, some larger shrubs, and informal paths. Phase II and Phase III will add many more flowering shrubs and ornamental grasses.

