

---

# COGdesign

---

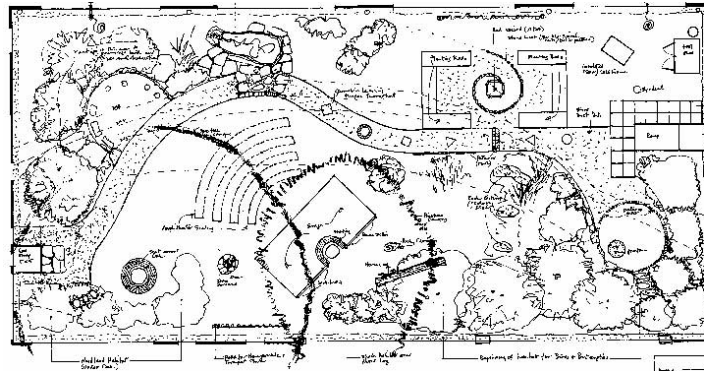
# Mitchell School

Client: Mitchell School, Needham

Designer: Alice Evans

Design Completed: Fall 2004

Installation Completed: October 2005



The enclosed courtyard at the Mitchell Elementary School in Needham needed to be refurbished. Visible from the main lobby, classrooms, and walkways, it presented viewers with a mish-mash of weeds, trees, and abandoned gardening projects. The principal, students, teachers, and parents at the school saw the possibilities and contacted COGdesign for help.

The school community envisioned an outdoor learning center with teaching gardens where students could enhance their classroom studies while enjoying and learning in their beautiful new space.

COG's landscape designer Alice Evans volunteered her services to help them achieve their goals. Her outdoor classroom design includes habitat gardens running along the entire edge of the school building. The various plantings help create inviting outdoor views from the classrooms. Sturdy, attractive benches facing a low platform create an amphitheatre.



The elegant simplicity of the structural design throughout the courtyard is flexible enough to allow for a wide range of uses.

The entire school community took part in the ribbon cutting for the new Outdoor Learning Center.

