

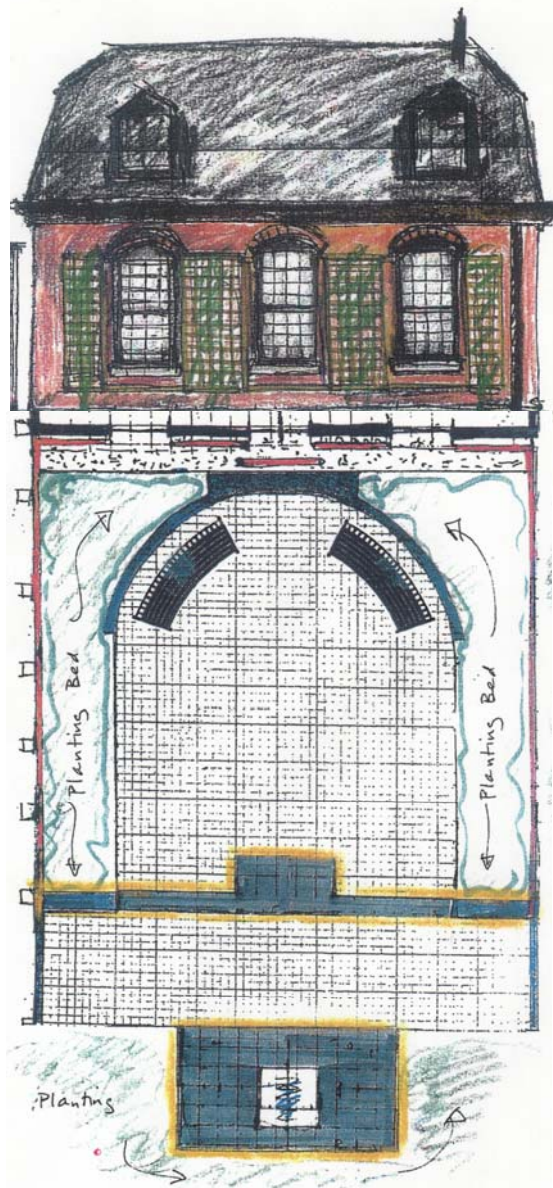
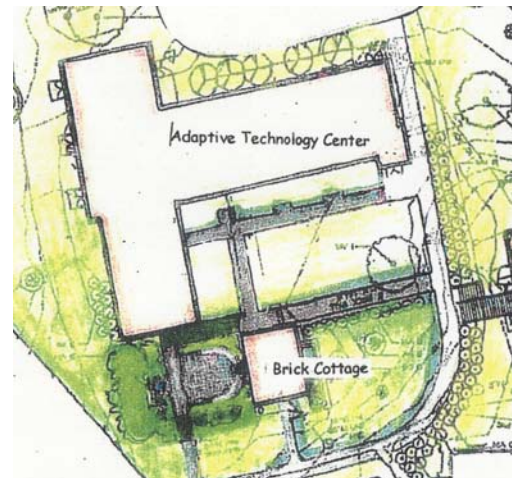
Client: Carroll Center for the Blind
Newton, MA

Designer: Alice Evans
Cambridge, MA

Janis Porter
Longmeadow, MA

Design

Completion: Summer 2003



The Carroll Center for the Blind is a private, non-profit agency which helps people who are blind or visually-impaired gain confidence and independence outside the home. To honor the memory of two of its most ardent supporters, Dr. Simon Devine and Rose Walsh, it was decided that a garden for the clients and staff to enjoy would be a lovely memorial. With this concept in mind, the Carroll Center called COGdesign for help.

One of the biggest challenges facing the designers was coming up with a plan that was equally appealing to both sighted and non-sighted people. They achieved this goal by creating a garden that can be enjoyed by viewing, and also by smelling, touching, and even listening.

The designers used different paving materials which provide textural clues as to where one is in the garden. The open center, which is large enough to accommodate small groups, is constructed with asphalt pavers. Cobble pavers and metal edging outline the borders of the garden, providing visual and tactile boundaries. A small fountain burbling at the end of the garden is a lovely focal point for eyes and ears. The planting beds around the edges of the garden are filled with strongly scented plants like lavenders and viburnums. Selections of ornamental grasses with soft, silky seed heads invite garden visitors to touch. Several varieties of roses, Dr. Devine's favorite flower, are featured in the planting plan. In an especially fitting tribute, there is even one included from his own garden.